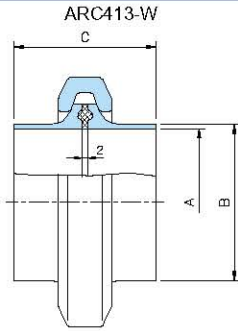


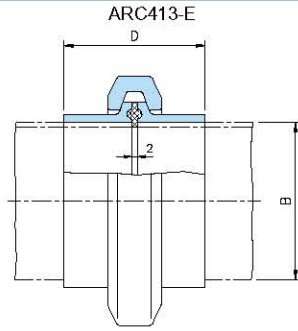
SANITARY CLAMP UNION FITTINGS (IDF/ISO)

- IDF/ISO standard clamp union joints are assembled by sandwiching and clamping the gasket between the ferrule.
- The welded clamped union is joined to the sanitary pipe by argon arc TIG welding. Working pressure is 10kg/cm² or less.
- The expanded clamped union is used to expand a pipe by a tube expander for subsequent joining of the joint. Working pressure is 5kg/cm² or less.
- The Fitting is tightened manually and no spanner is need

CLAMP UNION -WELD-

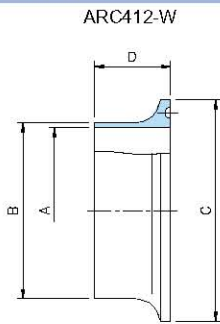


CLAMP UNION -EXPAND-

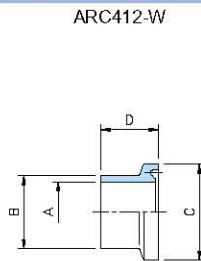


	A	B	C	D
1S	23	25.4	42	42
1.5S	35.7	38.1	42	42
2S	47.8	50.8	46	46
2.5S	60.5	63.5	54	54
3S	72.3	76.3	58	58
4S	97.6	101.6	58	58

FERRULE -WELD-(1S~4S)

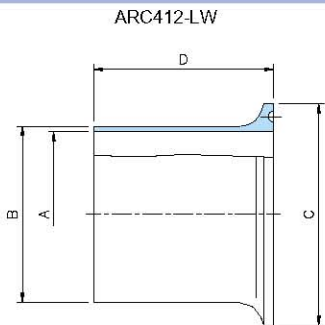


FERRULE -WELD-(1/2S~3/4S)

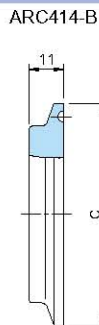


	A	B	C	D
1/2S	9.4	12.7	25	13
3/4S	15.7	19	25	13
1S	23	25.4	50.5	20
1.5S	35.7	38.1	50.5	20
2S	47.8	50.8	64	22
2.5S	60.5	63.5	77.5	26
3S	72.3	76.3	91	28
4S	97.6	101.6	119	28

LONG FERRULE -WELD-(1S~4S)

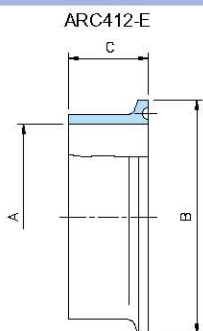


FERRULE BLANK

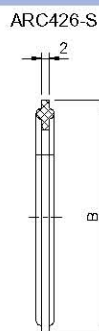


	A	B	C	D
1/2S	9.4	12.7	25	45
3/4S	15.7	19	25	45
1S	23	25.4	50.5	55
1.5S	35.7	38.1	50.5	55
2S	47.8	50.8	64	55
2.5S	60.5	63.5	77.5	55
3S	72.3	76.3	91	55
4S	97.6	101.6	119	60

FERRULE -EXPAND-



FERRULE GASKET



	A	B	C
1S	25.5	50.5	20
1.5S	38.3	50.5	20
2S	51	64	22
2.5S	63.8	77.5	26
3S	76.6	91	28
4S	102	119	28



ART SANITARY CO., LTD.

<BS EN ISO 9002 · KSA ISO 9002 인증기업>